



GO Safely

GO Reliably

GO Affordably

Transportation for Eligible
Residents of
Delaware County



What is
DEL*GO*
Community
Transit

501(c)(3) non-profit transportation company certified by the PA Public Utility Commission to provide demand response service to the general public.



Trips must begin in Delaware County.

Destinations outside of Delaware County are scheduled as available.

GO Safely

- Door to Door Service
- You don't wait alone at a bus stop
- Drivers pass drug and alcohol tests
- Drivers pass background checks
- Drivers have direct contact with dispatchers
- All vehicles are equipped with cameras
- The other riders are your neighbors

GO Reliably

- Operating since 1983
- 28 Buses and 14 Vans in the fleet
- All work on vehicles is done at the Eddystone location by trained mechanics
- Offering service 7 days a week
- With group transportation you can enjoy outings with your friends
- Make new friends

GO Affordably

- Senior Shared Ride Program - Pennsylvania Lottery pays 85% of trip cost - Riders pays 15%.
- Medical Assistance Transportation is covered 100% by the state
- If you need an assistant to accompany you, they receive a discounted fee of \$10
- Less than a car service (Uber or Lyft)
- Save money on personal car maintenance, gas and insurance

Senior Shared Ride Transportation Program



- Delaware County residents 65 or older.
- A reduced fare transportation program available to riders who are willing to share their trip with other passengers
- Service is Door to Door
- Rider must be a member of **DELGO** Community Transit – membership is free!

- Transportation is available for any trip purpose on a first come, first served basis
- Trips must originate within Delaware County, and go anywhere in Delaware County
- Out of county trips to destinations such as Philadelphia, The Airport, Lankenau Hospital, and others are available on a more limited basis
- Can be accompanied by someone between the ages of 18 to 64.



Senior Shared Ride Cost

- Seniors pay 15% of cost, unless sponsored
- Seniors who live in Media, Haverford Township, Tinicum, the Delaware County Housing Authority or belong to Senior Center receive a discounted rate, please check with your center for details
- Typical fare - \$4.35, PA Lottery funds 85%
- Payment is either a check or cash. Call office if you wish to pre-pay
- Payment is exact change to the driver – driver cannot make change

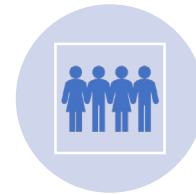
Where Can Senior Shared Ride Take You



Hairdressers
Barbers



Grocery
Shopping



Meeting
Friends



Entertainment
Movies



Restaurants
Cafes



Doctors Visits



Connect to
SEPTA Train
Stations

Membership Registration

- Go to ctdelco.org or search **DELGO Community Transit**
- Under the **DELGO** logo click – **Apply to Ride**
- This will send you to the PennDOT site where you will register
- If you are not a member, click – **Register Now**
- Fill out the registration form
- You will need proof of your age. Any of these can be used:
 - Birth or Baptismal Certificate
 - Drivers License
 - Armed Forces Discharge Papers
 - Passports or naturalization Papers
 - PACE Card
 - INS Resident Alien Card

Planning Your Trip

- Once registered you will receive your Rider ID Card
- Schedule your trip at **Find My Ride** on our web site, or by calling 610-490-3960
- Rides can be scheduled two weeks in advance but must be scheduled by noon the prior day for next day trips
- First come-first served basis
- Provide your name, pick-up address, time of pick-up, your destination, include a phone number where we can reach you and any special accommodations required
- Service dogs are allowed on all **DELGO** vehicles

FARE STRUCTURE

SECTION 2 Fare Structure

<u>Distance Range</u>	<u>Fare</u>	<u>15%</u>	<u>85%</u>
0-2.99	\$33.75	\$5.10	\$28.65
3-5.99	\$44.10	\$6.65	\$37.45
6-9.99	\$55.75	\$8.40	\$47.35
10-13.99	\$70.05	\$10.55	\$59.50
14-16.99	\$79.19	\$11.90	\$67.20
17-Unlimited	\$98.55	\$14.80	\$83.75

Escorts: \$5.00 per one-way trip within Delaware County, or \$10.00 per one-way trip into or out of surrounding counties or the client co-pay, whichever is higher.

The fares are listed as they are based on the requirements of the PennDOT Senior Shared-Ride Program, which states that the passenger must pay 15% of the cost of the ride (rounded up to the nearest nickel) and PennDOT will pay the remaining 85%.

Medical Assistance Transportation Program

Program for ACCESS Card Holders

- Program requires a completed application
- Go to ctdelco.org or search **DELGO** Community Transit
- Under the **DELGO** logo click – **Apply to Ride**
- If you are not a member, click – **Register Now**
- Fill out the registration form



Medical Assistance Transportation Program

- Available to those on Medical Assistance (Medicaid) in Delaware County
- Funded by Pennsylvania Department of Public Welfare
- Transportation to medical provider or hospital
- And to any service Medical Assistance (Medicaid) pays for
 - Therapies
 - Dental Visits
 - Pharmacy
 - Drug & Alcohol Treatment

Medical Assistance Transportation Program

MATP - least costly, appropriate mode of service

Physician

- Requests ParaTransit service for the client
- Complete the Certification of Disability and sign
- Provide a brief explanation of the functional disability, which prevents use of public transportation

Client

- Fills out the application to determine eligibility

Once forms are completed

- The verification process can take up to 10 business days
- Once eligibility is determined, written verification from **DELGO** will be sent
- Client will be notified, when transportation mode is approved
- Applications must have the Physician's signature

SEPTA CCT Connect

SEPTA Customized
Community Service
for Delaware County
Residents with a Disability

SEPTA CCT Connect

Residents of Delaware County with a disability

- Program requires a completed application
- Go to ctdelco.org or search **DELGO Community Transit**
- Under the **DELGO** logo click – **Apply to Ride**
- If you are not a member, click – **Register Now**
- Fill out the registration form



SEPTA CCT Connect

- **DELGO** Community Transit is contracted by SEPTA to provide this service in Delaware County
- This is **paratransit** service for individuals with disabilities through its **Customized Community Transportation** program.
- Fares for CCT Connect customers are different from fixed-route fares. The cost is \$4.25 for each one-way trip. Exact fare is required.
- It is not a taxi service, medical transport, or “special care” service. You should plan on sharing the vehicle with other customers

Qualifications for SEPTA CCT Connect

- Delaware County residents with a disability who live outside the SEPTA service area.
- Must provide a denial letter from Septa CCT stating your not eligible for door- to- door transportation
- No cost to for medical transportation to valid destination.
- If you have an escort, and the trip is within Delaware County the escort's fare will be \$5.00 each way. If the trip is to Philadelphia, the escort's fare will be \$10.00 each way.
- Basic service is from the curb of your pickup location to the curb of your destination. Door-to-door service may be provided if necessary and it is requested in advance.

Holidays & Weather

- **DELGO** is closed on the following holidays and/or on the day they are observed:
 - New Years Day
 - Martin Luther King, Jr. Day
 - Memorial Day
 - Independence Day
 - Labor Day
 - Thanksgiving Day
 - Christmas Day
- If road conditions make driving hazardous you will be notified with an automated phone call
- The safety of our drivers and riders is our primary concern **SEPTA CCT does operate on holidays**





For More Information on
These Programs or
Assistance with Your
Application
ctdelco.org

- **Shared Ride**
 - 610-490-3960
 - Monday-Friday 7:30 AM to 3:30 PM
- **Medical Assistance Transportation Program**
 - 610-490-3975
 - matp@ctdelco.org
- **People with Disabilities Program**
 - 610-490-3960
 - Monday-Friday 7:30 AM to 3:30 PM
- **SEPTA CCT**
 - 215-580-7145
 - Monday-Friday 7:30 AM to 4 PM
Saturday-Sunday 7:30AM to 4 PM

DELGO

COMMUNITY TRANSIT

GO Safely

GO Reliably

GO Affordably